

Jewellery Art & Design

This is a e-newsletter about art, jewellery, design and the process of changing vocation.

With personal observations of the pitfalls and joys that naturally follow.

Being too close to see the obvious...

Naming new designs.

I struggled to come up with a name for these chains. I called them all sorts 'chain things' until my dear french Marie-The said the obvious.

She simply asked me - How are your **Chanel** chains coming along? See? There it was, in front of me all along. Now, Chanel is not an option but **coco** says it too!

Coco Chains were born!



From Swarovski - pearls

Since my new stash arrived I've been glued to my work table. Seeing all this, who would blame me?

Order the catalog for prices, sizes and combinations. Send me an e-mail or click for an automatic e-mail response [here](#).

Coco Chains

The Coco Chains collection has been my little secret. Shared only with visitors of the house, a handful loyal supporters who knew what was brewing and spurred me on to work faster. Hence, I have been designing and beading in a frenzy lately.



Pricing. As long as you keep within the standard sizes the price will be the same for a custom design and catalog items. But you may have to wait a bit longer for your custom design, depending on materials in stock.

Material. The chains are plated steel in gold, silver and black + I also use stainless steel. The steel base adds a nice weight. For the collection I do not use silver chain for the Coco Chains because of tarnishing and difficult cleaning. But if you like the dark look it eventually will have and want to pay for silver, I'm happy to discuss and find a price.

Custom design for design freaks: With six pearl colours to choose from, four chain colours in different thicknesses + the different lengths, you can get really creative.

The catalog collection is there for you, if designing sounds daunting. I've put together a nice selection where you only have to decide the length and clasp.

GREY PEARL Coco chains detail sheet		GREY PEARL Coco chains necklace combinations	
<p>Coco Chain - collection is taking advantage of the ease of chain and pearls by combining chain - chain based necklaces and bracelets in different lengths and colours. The chain are carefully beaded, one Swarovski crystal pearl at a time, through each link of the chain. The result is a soft chain, feminine and sleek at the same time - like the colours soon they are named after. The chain come in stainless steel + gold, silver and black plated steel, the Swarovski pearls in six colours.</p>			
<p>Coco Chain gold - white</p>	<p>To combine with Swarovski pearls of choice:</p> <ul style="list-style-type: none"> 1- White 2- Cream/rose 3- Dark grey 4- Light grey 5- Dark grey 6- Gold 	<p>White pearl coco chains</p>	<p>4 or 6 mm Swarovski crystal pearls on gold and silver plated steel. Available in all 3 chain thicknesses. Stainless steel only in thickness fine.</p>
<p>Coco Chain gold - pastels</p>	<p>Chain colours:</p> <ul style="list-style-type: none"> Stainless steel Gold plated Silver plated Black-plated <p>Chain thickness:</p> <ul style="list-style-type: none"> Very fine Fine Standard 	<p>Creme/rose pearl coco chain</p>	<p>Available with Swarovski crystal pearls 4 or 6 mm. On gold, silver or black plated steel in all 3 chain thicknesses. On stainless steel only in thickness fine.</p>
<p>Coco Chain silver - champagne</p>	<p>Available in 3 necklace sizes: (Small - 48 cm, Medium - 60 cm, Large - 78 cm)</p>	<p>Light Grey pearl coco chain</p>	<p>Available with Swarovski crystal pearls 4 or 6 mm. On gold or black-plated steel in all 3 chain thicknesses.</p>
<p>Coco Chain black - gold</p>	<p>Available in 2 bracelet sizes: (Single - 18 cm, Double - 28 cm)</p> <p>Clasp: Toggle or lobster</p>	<p>Dark Grey pearl coco chains</p>	<p>Available with Swarovski crystal pearls 4 or 6 mm. On gold or silver plated steel, in all 3 chain thicknesses. On stainless steel only in thickness fine.</p>
		<p>Gold pearl coco chain</p>	<p>Available with Swarovski crystal pearls 4 or 6 mm. On gold or black plated steel in all 3 chain thicknesses. On stainless steel only in thickness fine.</p>

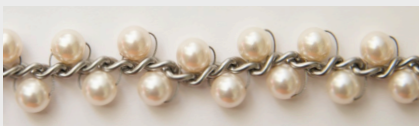
On this page:

Samples the newest designs

Coco Chains



This collection combines the versatility of chains and the beauty of pearls.



Each chain is carefully beaded, one Swarovski crystal pearl at a time, through each link of the chain.



The result is a softened chain, feminine and strict at the same time - just like the couture icon they are named after.



Coco Chains are chain-based pearl necklaces and bracelets

Send me an e-mail or click for an automatic e-mail response [here](#).

Coco Chains - material

Four good reasons why I chose to adorn the Coco chains with **Swarovski's** beautiful, perfect crystal pearls:

Their luster - Swarovski Crystal Pearls are finished with multiple layers of very luminous pearlescent coating on a heart of finest Austrian crystal.

Their quality - exquisite craftsmanship make them the best quality glass pearls on the market; these glass pearls should not chip if they fall on a stone floor. These are the only glass pearls I trust in combination with metal and for the wear and tear of a bracelet. Also, they are not affected by perfume etc.

Consistency - consistently nice-looking, the pearls are perfectly even, important for this design. And the holes have the right dimension for either clear, elastic string or a thin beading wire.

Colour choice - Swarovski has a wonderful selection of colours and sizes in their range of Crystal Pearls. I have chosen six of more than twenty colours for Grey Pearl's standard collection.



White creme Rosaline Light grey Dark grey Gold



- and from England - chains!



ABOUT:

I'm Tittin Rinde, a freelance designer, visual artist and colour consultant.

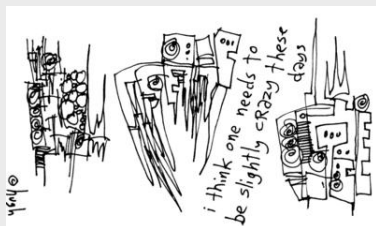
Textile designer by degree, with a passion for colour. Design & art are tools for both expression and communication. Writing helps to wrap it up.

Born in Norway, childhood in Switzerland, living in south of France. Educated in Norway at KHiO, National Academy of the Arts, Oslo.

Work experience: designing for interiors, textiles and interior related products, presentations, collection work and catalogs. Last on the list is jewellery design.

Contact: tittin@rinde.com

Website: Grey Pearl studio



All cartoons by [HUGH MACLEOD](#)

[Click to unsubscribe](#)

Three types of look and feel

The chains link size in relation to the bead size decides the overall looks of the Coco Chains. In addition the beads can be attached in two different ways. The normal version is with every second link filled. An alternative is to bead on pairs of pearls, which makes it more chunky.



Standard every second bead bracelets



Extra-chunky double beaded bracelets.



Non standard bracelets.
Pearl set deep in very large link.



How did it start?I was asked...

A while ago, I came across a some nice vintage faux pearls and couldn't help playing around with them. At some point, the box of pearls, some silk spools and a stainless steel chain happened to share a corner of my desk. That did it! They merged - at first in my imagination.

Some tests and many hours later I had an unusual pearl and steel necklace with a nice weight to it. A statement piece - either four times around my wrist or as a long necklace. It became my signature adornment, enhancing any outfit.

Soon I started to get questions about where I got it. That was it!

Wintery wishes from

Tittin @ GREY PEARL!